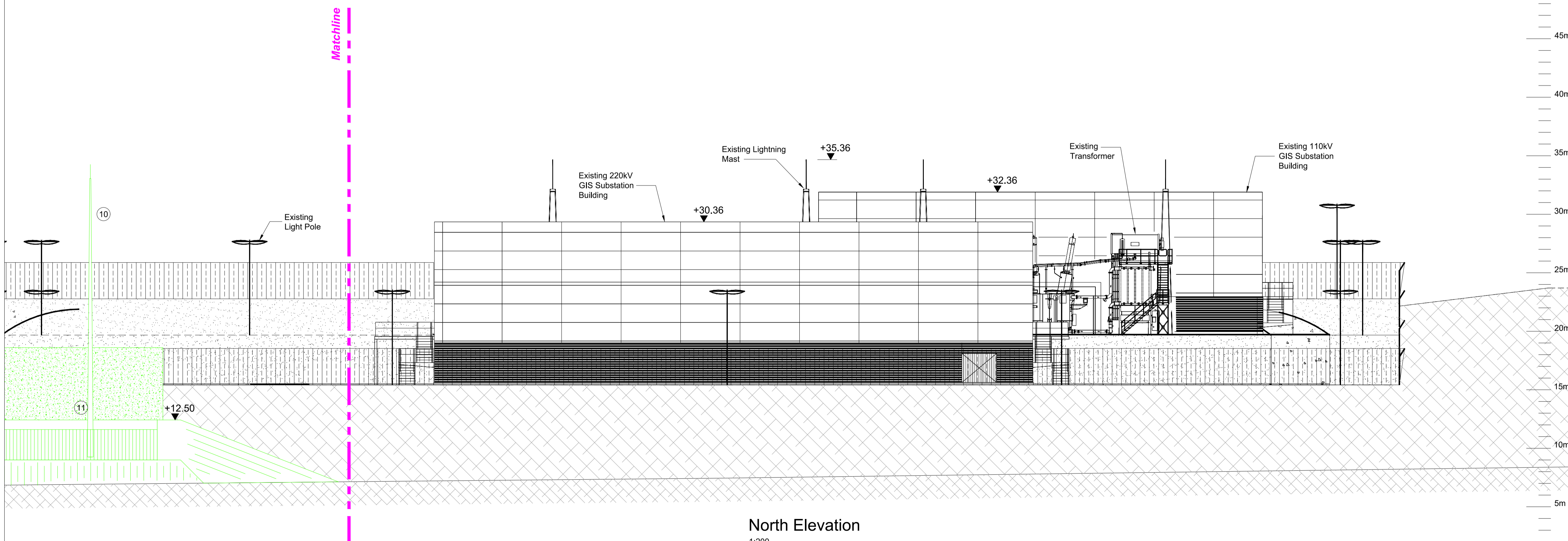


North Elevation
1:200



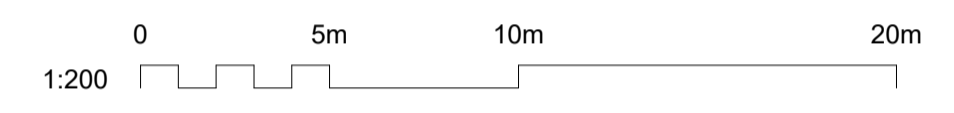
North Elevation
1:200

Notes
 1. For planning purposes only.
 2. All dimensions are in metres unless otherwise noted.
 3. All levels are in meters above Malin Head Datum.

Key to symbols

	Existing Equipment
	New Equipment
	Existing Ground Level

New Equipment Schedule	
Item	Description
01	Power Transformer
02	Surge Arrestor
03	Post Insulator
04	Disconnect / Earthing Switch
05	Current Transformer
06	Voltage Transformer
07	Circuit Breaker
08	Cable Sealing End
09	Control Building
10	Lightning Monopole (25.0m)
11	Light Pole (9.0m)
12	Palisade Fence (2.6 m)



Reference drawings

229379408-MMD-01-XX-DR-E-1200	Kilpaddoge 400kV AIS Substation - Overall Plan Layout
229379408-MMD-01-XX-DR-E-1226	Kilpaddoge 400kV AIS Substation - Contiguous Site Elevation - Sheet 2 of 4
229379408-MMD-01-XX-DR-E-1227	Kilpaddoge 400kV AIS Substation - Contiguous Site Elevation - Sheet 3 of 4
229379408-MMD-01-XX-DR-E-1228	Kilpaddoge 400kV AIS Substation - Contiguous Site Elevation - Sheet 4 of 4

PL1	10.07.2020	CHC	Issued for Planning	DMcC	TK
Rev	Date	Drawn	Description	Ch'k'd	App'd

MOTT MACDONALD

South Block
 Rockfield
 Dundrum
 Dublin 16
 Ireland
 T +353 (0)1 291 6700
 F
 W www.mottmac.com

Client

Title
Capital Project 0970
Cross Shannon 400 kV Cable Project
Kilpaddoge 400kV AIS Substation
Contiguous Site Elevation
Sheet 1 of 4

Designed	B. Zulueta	Eng check	D. McCormack
Drawn	C. Cunningham	Coordination	E. Halpenny
Dwg check	D. Hassett	Approved	T. Keane
Scale at A1	Status	Rev	Security
1:200	PRE	PL1	STD
Drawing Number 229379408-MMD-01-XX-DR-E-1225			

© Mott MacDonald Ireland
 This document is issued for the party which commissioned it and for specific purposes connected with the captioned project only. It should not be relied upon by any other party or used for any other purpose.
 We accept no responsibility for the consequences of this document being relied upon by any other party, or being used for any other purpose, or containing any error or omission which is due to an error or omission in data supplied to us by other parties.