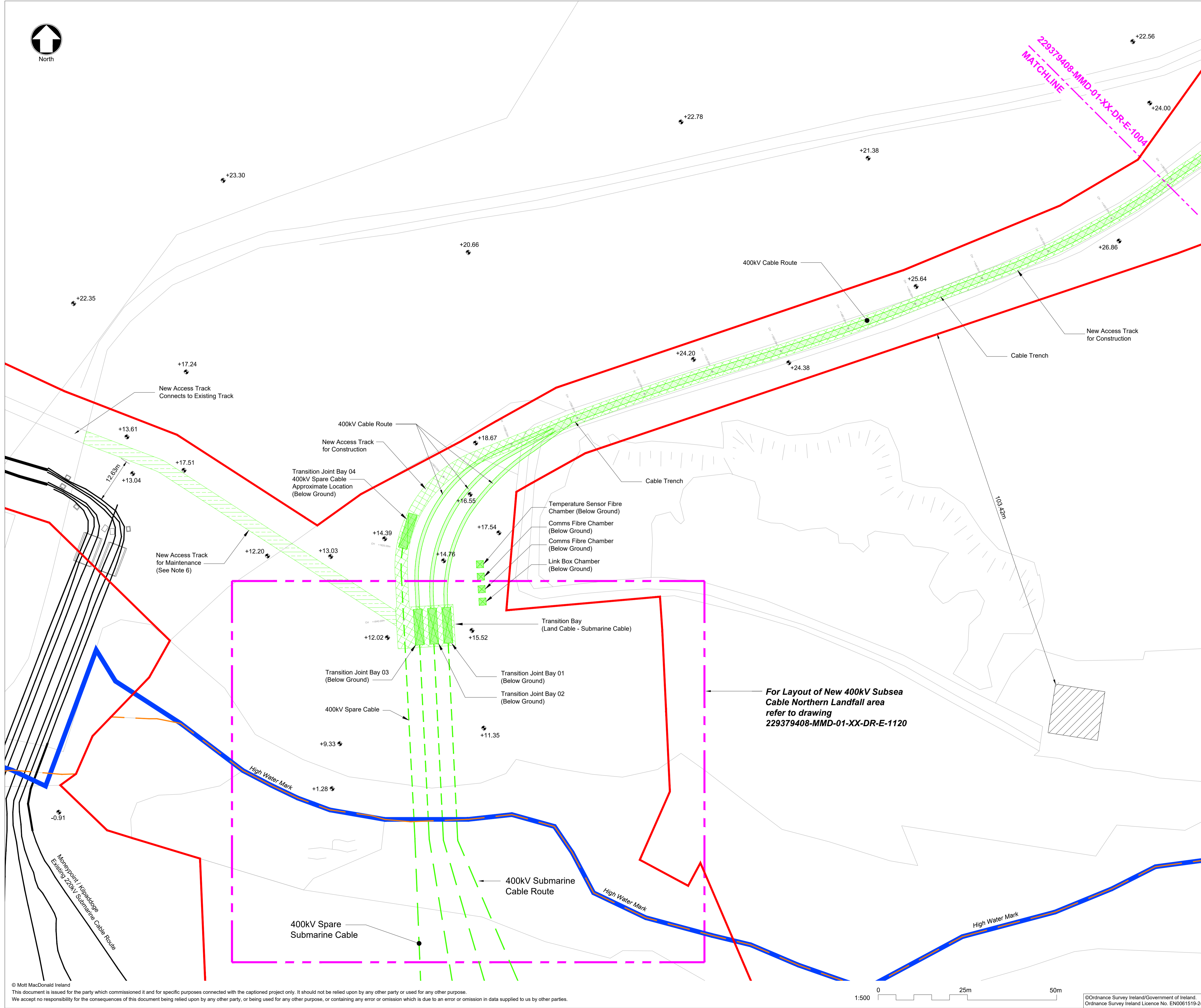




North



- Notes
- For planning purposes only.
 - All dimensions are in metres unless otherwise noted.
 - All levels are in metres above/below Malin Head datum.
 - For details of the 400kV cable trench, refer to drawings 229379408-MMD-01-XX-DR-E-1010, 229379408-MMD-01-XX-DR-E-1011 and 229379408-MMD-01-XX-DR-E-1012.
 - Access Track Construction:
Strip back 150mm of topsoil,
100mm of CL.804 (top layer),
on 200mm of 6F1,
on SECUTEX 151 GRK 3C geotextile.

Key to symbols

	Application Site Boundary
	New Equipment
	Existing Equipment
	New Submarine Cable
	High Water Mark
	New Cable Trench
	Road Access to Transition Bay
	Maintenance Access to Transition Bay
	Cable Joint Bay
	Residential / Sensitive Receptor
	Related Landholding
	Wayleave

Reference drawings

229379408-MMD-01-XX-DR-E-1000	Shannon 400kV Cable - Land Cable Route - Overall Plan Layout
229379408-MMD-01-XX-DR-E-1004	Shannon 400kV Cable - Land Cable Route - Sheet 4 of 5
229379408-MMD-01-XX-DR-E-1010	Shannon 400kV Cable - Land Cable - Typical Detail Sheet 1 of 3
229379408-MMD-01-XX-DR-E-1011	Shannon 400kV Cable - Land Cable - Typical Detail Sheet 2 of 3
229379408-MMD-01-XX-DR-E-1012	Shannon 400kV Cable - Land Cable - Typical Detail Sheet 3 of 3
229379408-MMD-01-XX-DR-E-1120	Shannon 400kV Cable - Subsea Cable - Northern Landfall - Moneypoint - Plan Layout & Section

PL1	10.07.2020	CHC	Issued for Planning	DMcC	TK
Rev	Date	Drawn	Description	Ch'k'd	App'd

MOTT MACDONALD

South Block
Rockfield
Dundrum
Dublin 16
Ireland
T +353 (0)1 291 6700
F
W www.mottmac.com

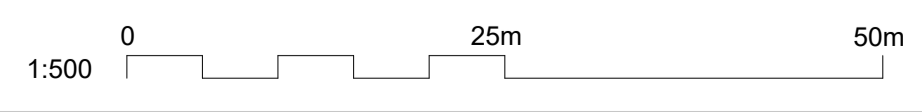
Client

Title
Capital Project 0970
Cross Shannon 400 kV Cable Project
Shannon 400kV Cable - Land Cable
Moneypoint Station
Cable Route Layout - Sheet 5 of 5

Designed	B. Zulueta	Eng check	D. McCormack
Drawn	C. Cunningham	Coordination	E. Halpenny
Dwg check	D. Hassett	Approved	T. Keane
Scale at A1	Status	Rev	Security
1:500	PRE	PL1	STD
Drawing Number 229379408-MMD-01-XX-DR-E-1005			

For Layout of New 400kV Subsea Cable Northern Landfall area refer to drawing 229379408-MMD-01-XX-DR-E-1120

© Mott MacDonald Ireland
This document is issued for the party which commissioned it and for specific purposes connected with the captioned project only. It should not be relied upon by any other party or used for any other purpose.
We accept no responsibility for the consequences of this document being relied upon by any other party, or being used for any other purpose, or containing any error or omission which is due to an error or omission in data supplied to us by other parties.



© Ordnance Survey Ireland/Government of Ireland.
Ordnance Survey Ireland Licence No. EN0061519-24